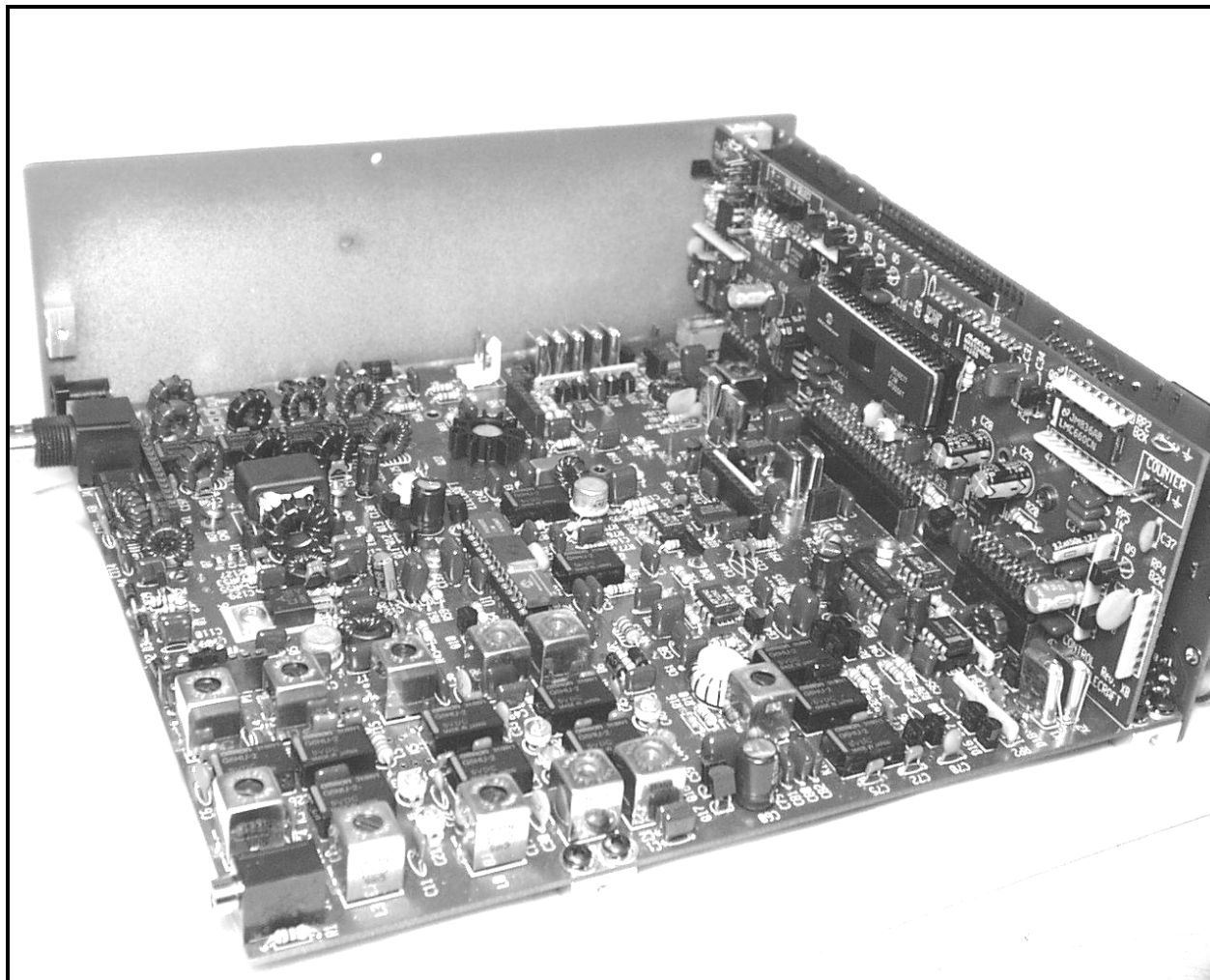


Appendix D - K2 Detail Pictures



**Figure 1**

K2 rear right view with side panel removed.

Appendix D - K2 Detail Pictures

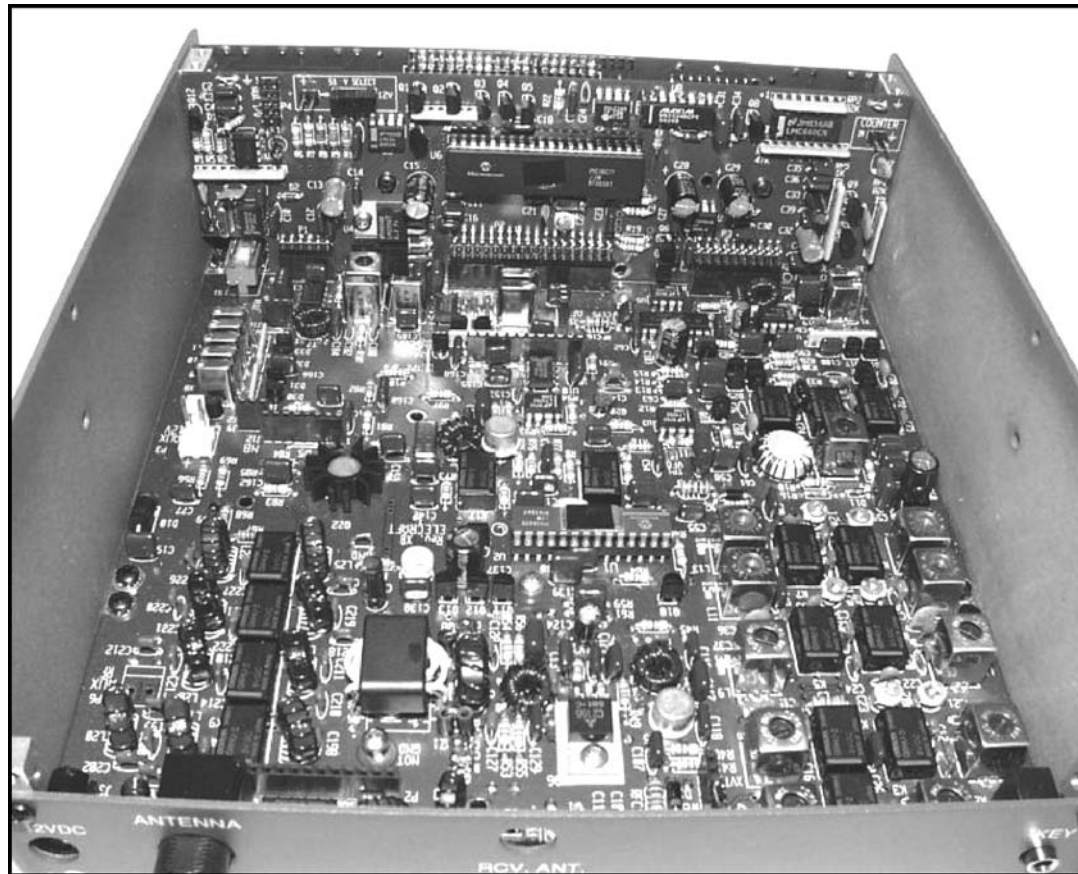
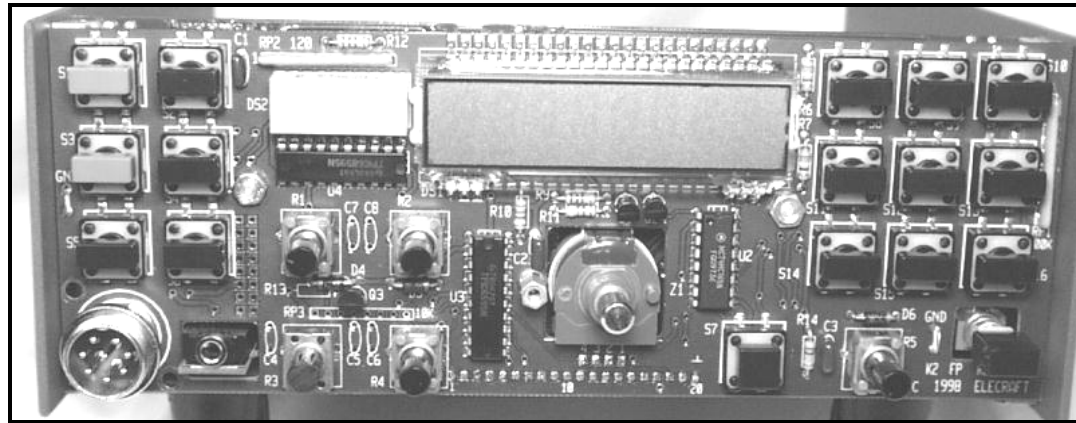


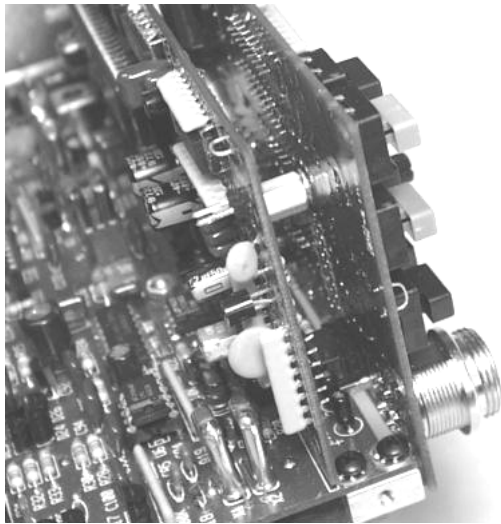
Figure 2  
K2 Rear View

## Appendix D - K2 Detail Pictures



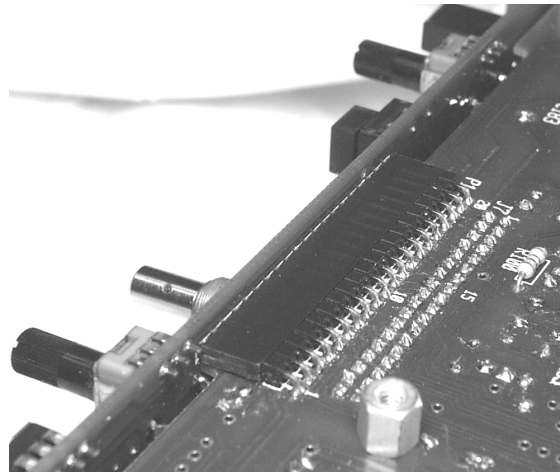
**Figure 3**

K2 Front Panel PCB



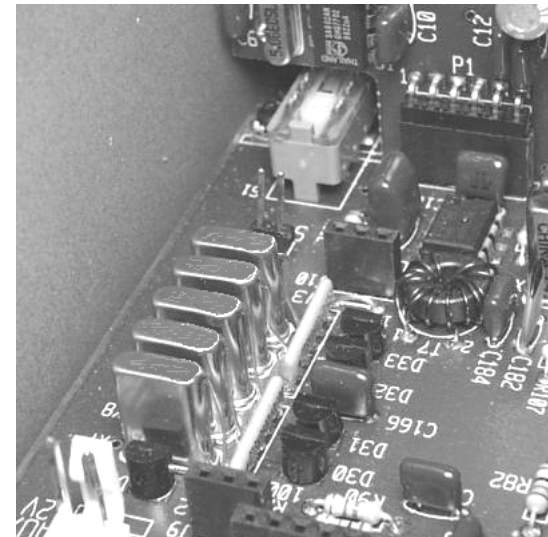
**Figure 4**

Detail of Control to Front Panel PCB Mounting.



**Figure 5**

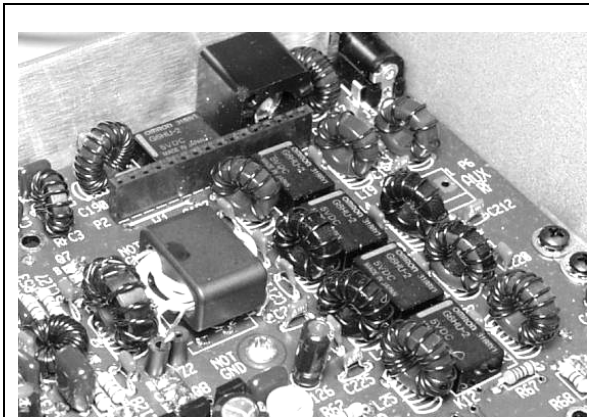
Detail of P1 (bottom of RF board) to Front Panel



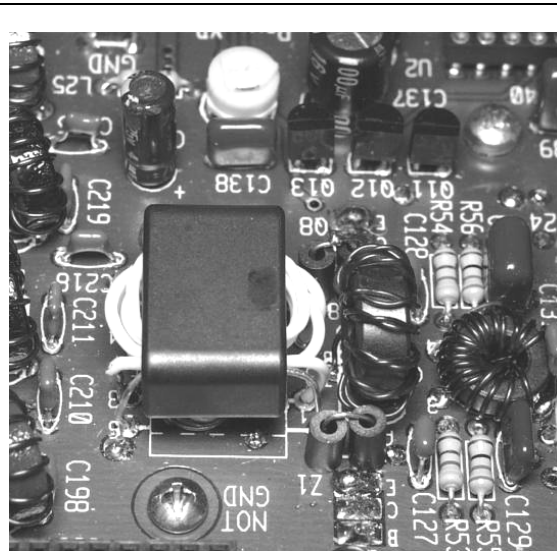
**Figure 6**

Five pole 4.915MHz crystal filter detail.

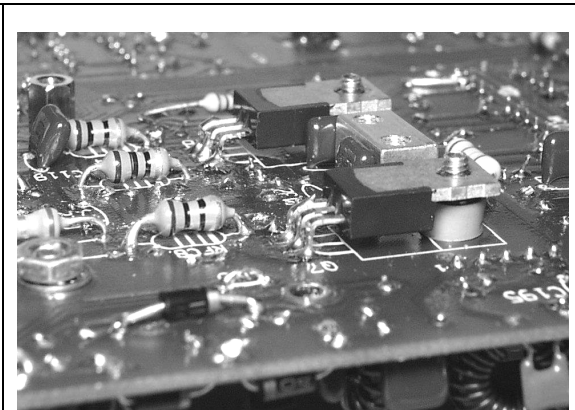
**Appendix D - K2 Detail Pictures**



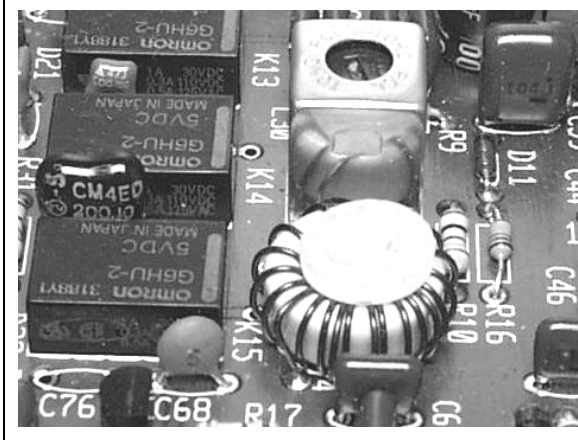
**Figure 7**  
PA and Low Pass Filter Detail



**Figure 8**  
PA transformer (T4), Bifilar PA collector transformer (T3) and Driver to PA transformer, (T2). Z1, Z2 feedback ferrite beads are also shown.



**Figure 9**  
PA Transistor mounting detail on bottom of RF PCB. Right angle bend of transistor leads shown along with self-retaining mounting spacer and black shoulder washer (between spacer and transistor tab). 2D block shown between transistors.



**Figure 10**  
← PLL VCO transformer (T5) detail. L30 and VCO relays are also shown